

Corporate Profile

YABUKI KAIUN KAISHA, LTD.

会社案内

<http://www.yabuki-kaiun.co.jp/>

A Message from the President

As a total logistics organizer, we provide high-quality services to our customers

Since the company was established in 1922, we have gained trust from our customers through our faster, safer and better services with our consistent motto, “offering transportation services always in the position of our customers.”

The economic situation surrounding our country has changed so rapidly and drastically. And accordingly the customers strongly hope for using more economical and high-quality logistics services that can break through such a situation.

In order to meet our customers’ demands more accurately, we continue to be a total global logistics organizer who can offer more extensive, economical and excellent services, in response to the changing situation on the basis of our know-how accumulated since the establishment. And all of our employees continue to make great efforts together so as to provide more and more assistance to our customers.

We look forward to your continued business in the future.



YABUKI KAIUN KAISHA, LTD.
Kinichiro Yabuki, President

Company Overview

Name

YABUKI KAIUN KAISHA, LTD.

Establishment

February 1, 1922

Formation of Joint-Stock Company

April 11, 1938

Head Office

2-17-4 Shibaura, Minato-Ku, Tokyo 108-0023, Japan

Tel

+81-3-3453-1371 (Main Switchboard)

Capital

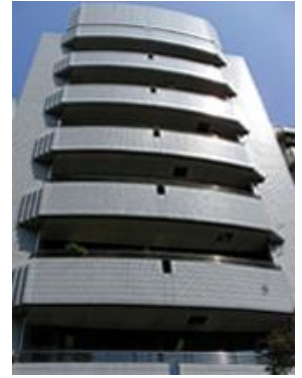
60 million Japanese Yen

President

Kinichiro Yabuki

Number of Employees

135



Mizuho Bank, Hamamatsucho Branch

Mizuho Bank, Yokohama Branch

Sumitomo Mitsui Banking Corporation, Mitadoori Branch

Sumitomo Mitsui Banking Corporation, Yokohama Branch

Bank of Tokyo-Mitsubishi UFJ, Tamachi Branch

Corporate Philosophy

We continue to be a company which satisfies our customers all over the world, which takes the challenge and undergoes a formation every day, and which gives the employees the sense of sufficiency.

Action Guideline

Offering more rapid, safer and more accurate global logistics services

Dynamic Logistics



We offer large-scaled dynamic logistics services by making use of our global network which enables us to run freely through land, sea and air.

With our logistics power that we have uniquely-acquired we meet all global logistics needs, and we initiate a new era with our advanced pioneering spirit. A constantly advancing logistics company oriented to the world and the future... that is Yabuki Kaiun Kaisha, Ltd.

International Intermodal Transportation



Exchanging information with our overseas cooperative forwarding partners through our global network, we choose the most appropriate transportation method consisting of various modes and routes. Under a consistent system of responsibility, we offer safe, accurate and rapid transportation services which enable cost reduction resulting in greater customer satisfaction.

Company History

At the Time of Foundation



KINZO YABUKI

FEBRUARY 1922

Established YABUKI KINZO SHOHTEN in Nishi-Ku, Osaka by Kinzo Yabuki

1920



1930

DECEMBER 1933

Moved Head Office to Shiba-Ku, Tokyo

MARCH 1934

Opened Osaka Sub-Branch in Nishi-Ku, Osaka



APRI 1938

Changed the organization to YABUKI KINZO SHOHTEN, LTD. (Joint-Stock Company)

1940

DECEMBER 1950

Opened Yokohama Sub-Branch in Naka-Ku, Yokohama City



1950

MAY 1958

Upgraded Osaka Sub-Branch to Osaka Branch



JIRO YABUKI

1960

JULY 1961

Renamed the company YABUKI KAIUN KAISHA, LTD.

JULY 1968

Obtained a warehouse of 1650 square meters, together with land, in Naka-Ku, Yokohama City, and began warehousing operation after acquiring its business right from Oppama souko Ltd.



JULY 1969

Upgraded Yokohama Sub-Branch to Yokohama Branch

AUGUST 1969

Merged Akira Unyu K.K.

1970

APRIL 1986

Opened Ohi Wharf Operational Office in Ohta-Ku, Tokyo

1980



1980

JUNE 1992

Completed the construction of Yabuki Kaiun Building



FEBRUARY 1992

Celebrated the 70th year in business



1990

NOVEMBER 1999

Assumed the presidency by Kinichiro Yabuki



KINICHIRO YABUKI

APRIL 2001

Opened Hitachinaka Office in Ibaraki Pref.



2000

JUNE 2003

Changed to the Second Class Consigned Freight Forwarder with the enforcement of Consigned Freight Forwarding Business Act

NOVEMBER 2004

Opened a liaison office in Shanghai, China

OCTOBER 2006

Established Yabuki (Shanghai) Distribution Consultation Limited Company

JUNE 2007

Renamed the above company YABUKI KAIUN (SHANGHAI) CO., LTD.

OCTOBER 2007

Upgraded Hitachinaka Office to Hitachinaka Operational Office

2010

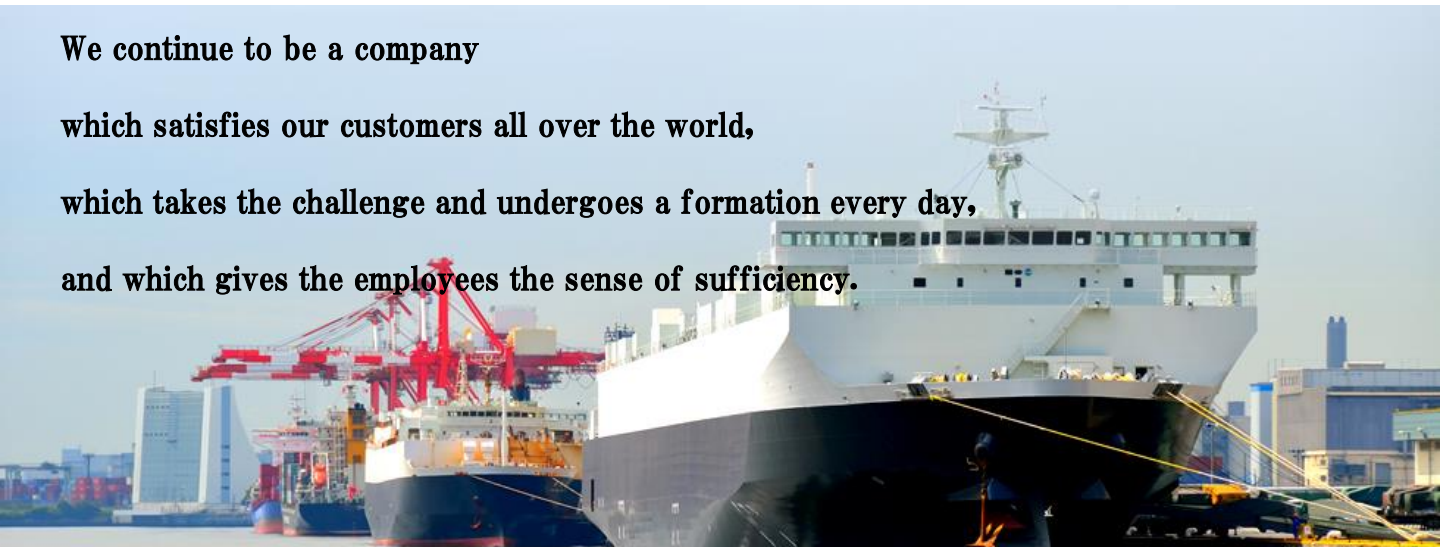
APRIL 2015

Established PT. Yabuki Tangguh Indonesia



For the Future

We continue to be a company
which satisfies our customers all over the world,
which takes the challenge and undergoes a formation every day,
and which gives the employees the sense of sufficiency.



Services



Harbor Transportation

We own Port Transport Business License and operate transportation and handling jobs accompanying loading/unloading of import/export goods such as small-lot consolidated goods, containerized goods, heavy cargoes and plant equipments.



Customs House Brokerage

Based on our experiences and performances accumulated over the years, we carry out customs clearance. And as a company certified as an Authorized Economic Operator (AEO) we bear a part in preventing illegal import/export and contribute to society.



International Multimodal Transportation

By using our network with members all over the world including our subsidiaries in China and Indonesia, we provide through transportation services. We also provide door-to-door transportation services not just to/from Japan but also between foreign countries.



Air Shipment Handling

To meet our customers' needs, we handle air cargoes. We provide detailed responses and services essential for urgent transportation.



Import/Export Agency Service

For our customers unfamiliar with import/export business, we create and arrange necessary documents, so that they can be relieved and leave such services with us.



Commercial Distribution Business

Using our network and know-how, we provide a one-stop service combined with logistics and commercial distribution in association with Kinyo Corporation, our 100% subsidiary in China.



Warehousing

By operating our warehouses connected efficiently with transportation, we can store not just import/export cargoes but also domestic cargoes. And for foreign cargoes, we own a bonded warehouse.



Packing

We can respond to all the needs of optimal packing design for a diversity of products considering the matters of transportation, storage and safety.



Assembly/Disassembly of Machinery Equipment

We have a lot of experiences in the installation of various machining tools and the assembly/disassembly of large plant equipments.



Insurance Agency

To improve conveniences of our customers, we act as an insurance agency for export insurance, marine cargo insurance, non-life insurance and all other kinds of insurance.



Real Estate Rental Business

We perform real estate rental business for our company-owned building and various other real estates.



3rd-Party Logistics

We draw up a logistics map that meets our customer's need from our customer's point of view, and we provide satisfactory 3rd-party logistics services.

Sections and Services

Sales Department



This department is a professional assemblage to transport any size of cargo from small to large.

By increasing borderlessness of business, the environment of logistics has been drastically changing. We propose to customers the optimal logistics methods for products from small objects and groceries to large equipment, using our know-how accumulated over years. And our responses to the environmental changes of logistics have been evaluated well by customers.

In order to respond to every need of each customer, we fully use our network connecting worldwide with overseas leading freight forwarders.

We exactly grasp and analyze customers' tasks and issues, and based on our abundant experiences and know-how we propose optimal logistics methods for lead time reduction, cost reduction, etc. In the transportation of important cargoes entrusted to us by our customers, we provide detailed and satisfying services and we deliver the cargoes safely and securely to receivers.



Characteristics of Sales Department

By using our expertise and know-how accumulated over years we exactly grasp and analyze the details of customers' logistics and we propose optimal logistics methods for efficiency promotion, lead time reduction, cost reduction, etc.

Main Products for Handling

We handle a variety of products from small to large, such as food stuff, groceries, home electric appliances, precision machinery, OA equipment, machining tools, cutting-edge parts.



Machinery Department



This department is an assemblage of specialists in handling construction machinery.

We are the specialized section in handling import/export of construction machinery.

We handle many kinds of construction machinery such as hydraulic shovels/cranes, dump trucks and wheel loaders irrespective of whether they are new or used. To respond to customers' needs in response to customers' needs we provide a wide range of operations such as the packing of heavy products for export, or the reassembly, the rust-preventive treatment and the maintenance of hydraulic shovels.

Construction machinery is heavy and bulky and is basically loaded onto a roll-on/roll-off ship or a conventional ship.

But we can propose to stuff a product weighing over 10 tons into a dry container based on our know-how accumulated during handling heavy products for many years.

And we realize the cost reduction not just for export but for import by using such know-how. In the transportation of parts, we apply the container round use by using returnable pallets.

And we are good at handling transportation between three countries which is recently increasing. We are the member of overseas network connecting with about 100 countries, and we respond to new needs of operation services in foreign countries such as picking-up, customs clearance, loading onto ships, sea transportation of products.

And such services of ours are evaluated well by our customers.

We will continue to work hard on proposing and reconstructing transportation methods from the perspective of our customers.

Characteristics of Construction Machinery Sales Department

We can propose an optional transportation method in accordance with product characteristics.

And we have special qualifications for the operations such as the maintenance of product, the reinstallation of product at port, etc.





For Any Logistics Need for Plant and Project

Using high skills and abundant know-how accumulated through our experiences, we offer optimal logistics services for a series of import and export operations for plant and project cargoes including heavy products in response to customers' needs.



Characteristics of Handling Plant and Project Equipment

We use our own domestic and overseas network effectively and we value and cherish our connection between persons. And we provide various service arrangements for transporting heavy/long cargoes as a professional in logistics without adhering to fixed ideas

Safety Work

Complying with laws and regulations, our persons in charge respond to customers responsibly and sincerely.



International Sales and Operation Department



Delivery various size of cargo to all over the world.

We provide tailor made transportation options to meet customer's demands by combining various transportation methods by land, sea and air.

Our dedicated sales representatives always go the extra mile and manage all mode of transportation to ensure safe and secure transportation so that customers can rely on YBK service at all time.

You will have our full support to deliver your cargo to its destination by taking advantage of our global network of overseas partners from over 99 countries.

Characteristics of International Sales and Operation Department

By using the means of transportation such as a container ship, a ferry and an aircraft according to the needs of customers, we deliver cargoes safely and speedily.

For international multimodal through transportation services combining land, sea and air transportation, we can timely report the cargo status to customers.

We handle a variety of products from small lots to large machinery. Our personalized staff members offer proposals of our detailed services according to the conditions of customers.

Please feel free to get in touch with us even for any small matter.

Line of products we handle

LCL / small cargo to bulky cargo(e.g.: baggage, furniture, general merchandise, food product, machinery and spare parts, etc..)



Overseas Development Section



This section is the vanguard for the development of global operations.

As the vanguard for total forwarding operator which our company aims to become, we strive to lay the foundation for providing our logistics services in response to the needs of customers. And by placing emphasis on planning of new services abroad, we fully respond to the needs of customers.

Yokohama Branch



The professional assemblage of specialists in speedy and exact handlings in the port area

We handle a variety of cargoes from groceries to large machinery weighing over 100 tons. We also handle many cargoes not just for container ships but also for roll-on/roll-off ships.



Characteristics of Import and Export Operation Section

We provide optimal services in response to every need of import/export handling for LCL cargoes, FCL cargoes or cargoes for roll-on/roll-off ships including the application procedures to the authorities concerned.

1. Operations according to the cargoes from pick-up to carry-in, packing and loading onto ships. Overseas operations from import customs clearance to the installation at factories
2. Unloading of heavy cargoes onto barges or domestic ships, and arranging marine cranes for such unloading operations. Arranging application to the customs.
3. Arranging necessary procedures including inspection for loading hazardous cargoes onto ships
4. Delivery preparation in accordance with the characteristics of import cargoes

We also respond to other requirements of customers speedily and exactly.

Characteristics of Port Transport & Mechanical Engineering Team

We store and manage important cargoes entrusted to us by our customers in the bonded storage field approved by the customs.

After the customs clearance, using large and small handling machines we conduct safety-first operations such as truck loading/offloading, container stuffing/unstuffing and barge loading/discharging in accordance with the shapes and characteristics of cargoes.

Ohi Wharf Operational Office



We handle a wide variety of cargoes.

Ohi Wharf Office is in charge of import/export operations in the Port of Tokyo. Backed by producing and consuming regions throughout Kanto Area, we handle a wide variety of cargoes.



Characteristics of Ohi Wharf Operational Office

■ Promptness

Responding to customers' requests at the best timing, we provide our services of export handling for cargoes from small lot to large lot and of import handling to meet HDS (Hot Deliver Service).

■ Handling of Wide Cargo

In the area of Tokyo Port, most of the cargoes are handled for container ships, and we can respond to all shapes of cargoes from cartoned apparel products to long commodities to be stuffed into containers, bare products and all others.

We conduct optimal operations in accordance with the characteristics, natures and shapes of cargoes.

We always strive to provide our services responding to customers' needs.

■ Storage and 3PL (3rd-Party Logistics)

We have broad spaces in Tokyo Kaika Center at Ohi Wharf and in Ohi Kaika Uwaya, and such spaces can be used widely for storage, sorting/modification, inspection, etc.

And we can secure spaces of our cooperative companies. Please feel free to contact us.

Hitachinaka Operational Office



From Hitachinaka to the World

In close coordination with our cooperative companies, we have developed management systems capable of delivering cargoes just in time to the places designated by customers.

For import/export operations at Hitachinaka Port and for domestic operations, we offer safe, wasteless and detailed plan and quotation.



Characteristics of Hitachinaka Operational Office

■ Quotation:

For import/export operations and domestic operations at Hitachinaka Port, we offer safe, wasteless and detailed plan and quotation.

■ Customs Clearance:

To offer smooth customs clearance services as a broker certified as AEO (Authorized Economic Operator), we perform customs clearance procedures by ourselves.

■ Handling and Storage for a Series of Import/Export and Domestic Operations:

We have developed prudent management systems capable of responding to a series of domestic and import/export operations.

We manage 28,000 square meters of open storage yard in Kita-Futo (North Pier). By using this yard and public facilities like prefectural sheds, we provide our services matching customers' needs such as container stuffing/unstuffing and storage for cargoes from small-lot articles to heavy products.

■ Transportation:

In close coordination with our cooperative companies, we have developed management systems capable of delivering cargoes just in time to the places designated by customers.

Commercial Distribution Department



We deliver safe and high quality "Made in Japan" products to consumers all over the world.

As a professional in logistics we use effectively our network and know-how and we offer one-stop services for logistics and commercial distribution in close coordination with Kinyo Trading Co., Ltd., our 100% subsidiary.

We arrange to transport each product speedily through an optimal route in lower cost while maintaining the quality.



Characteristics of Commercial Distribution Department

For the manufactures or retailers who plan to develop their businesses overseas but are unfamiliar with necessary procedures, We propose an optimal plan from a broad perspective both of logistics and commercial distribution, and we serve as a bridge to overseas markets.

Custom Clearance Center



We've organized our customs clearance operations to ensure swift and reliable services.

With the revision of the customs act in 2017, the Customs and Tariff Bureau has loosened its procedures. Previously, export/import declarations of cargo were made in the customs office in their designated jurisdiction.

Especially in regards to AEO approved agencies, it is now possible to submit customs declarations at any customs office nationwide.

To leverage this change, we have consolidated our three operation bases in OHI, YOKOHAMA, and HITACHINAKA, to one operation base in our head office as of June 2018. This will allow for simplified warehousing, and reduce lead times.



Characteristics of Custom clearance Center

As a licensed customs broker, we conduct customs clearance jobs speedily and exactly corresponding to customers' needs.

For Export:

Complying to Export Trade Control Order, and other laws and regulations, we respond to all customs clearance jobs for machinery, electric apparatus, chemical goods, groceries, food stuff, etc.

For Import:

We handle wide variety of cargoes from foot wears, bags, clothing articles, machinery and metal products to secondhand motorcycles, groceries and food stuff.

We have a lot of customs clearance experiences in the application procedures of import food, phytosanitary measures and quarantine inspection for livestock products and in the use of systems of tax reduction and exemption. We respond to customers' needs and deliver the cargoes to the designated places speedily and exactly.

Dispatch control center



Inland transportation specialist. Strengthening and expanding transportation competitiveness through business consolidation of container drayage.

Hltachi Transport System encouraged to organize container drayage operation in Tokyo Port, and Hltachi Transport System and Yabuki Kaiun have established "Dispatch Control Center" to enhance and expand the competitiveness of its operation.

As the shortage of drivers and vehicles intensifies, we made an effort to secure reliable vehicles by sharing both of our existing transportation network. We aim to optimize transportation costs, improving efficiency by consolidating logistics, promoting round-use (round-trip use), inland depot utilization, and also promoting modal shift to environment-friendly.

Characteristics of Commercial Distribution Department

We arrange proper vehicle with prompt service in order to meet customer's demand.

We will continue to actively challenge ourselves in new fields such as environmental measures and so on.

- We provide wide variety of transportation services
- We can handle spot transport and urgent transport
- We provide environment friendly transport
- We arrange transport for various size of cargo from LCL to bulky cargo.

Administrative Department



We respond conscientiously also to individual customers.

We manage the flow of people, goods, money and information and hold a cross-sectional role to manage the company smoothly. Our primary responsibilities are accounting, finance, administration, general affairs, insurance agency operation, real estate management, etc.

Beside those, we will strive to be recognized in the society not only for sales amount but also for the contribution through our efforts in safety and health, compliance with laws and regulations or concerns for environmental sanitation.

B.P.R. Department



We contribute to the promotion of optimization and efficiency in all of the logistics operations.

In order to optimize all the logistics services we provide, we implement and offer improvement measures based on both practical and data logistics.

We visualize logistics figures and design our plan to be optimal through the entire range of customers' requirements.



Characteristics of Business Planning Department

In this department we have staff members who have a lot of practical experience in 3PL (3rd-Party Logistics) operations in Japan and abroad.

We carry out consulting for 3PL services in accordance with customers' needs by using our domestic and overseas network which is a part of our strong points. And in response to customers' requirements we offer our assistance not just in actual logistics but also in information technology.

Approach to Safety

We ensure safety and quality of our logistics service.



As a creative logistics company bearing the future of international business, we realize that “safety and security” is our primary policy and we are approaching to it in order to fulfill our social responsibility.

To provide our customers with “safety and security,” all of our employees from the management to field operators are striving together to observe our company policies and rules.

– Management System for Ensuring Safety

Unfortunately nothing remains visible of our services that we provide to our customers. However, in order for our customers to receive a cargo in relief, we believe that such an unseen part of our service is very important. In our work field we touch and move a cargo. And we create necessary documents to clear the customs and to ship or receive the cargo. Each section of our company manages our service in order to perform securely such field work and document work according to our customer's instruction. We conduct the same management regarding the outsourced operation. In case any damage/accident occurs to our regret due to the lack of our supervision, we investigate and organize the details, extract the issues, and take measures to prevent a recurrence of such a damage/accident under the initiative of our safety committee.

Safety Committee

– Management System to Secure Safety and Quality

Purpose: To insure safety of employees and to provide our customers with confidence by our efforts for safety and quality
Constituent: Committee members elected from each work place

Committee Work:

(1)Regular Meeting: The 3rd Wednesday of the Month with the participation of all the members

- Exchanging information about safety and health
- Explaining information and notifications from the authorities concerned and the business field to ensure understanding in the company
- Sharing information about the processing of damage/accident, etc.

(2)Countermeasure Meeting for Damage/Accident:

When the occasion calls for it with the participation of persons concerned with the processing of damage/accident

(3)Field Patrol: Monthly by persons concerned

(4)Safety and Quality Meeting with Cooperative Companies: Monthly at each office concerned

Safety Committee

– Introduction of activities



Morning Meeting before the Work

Our workers confirm each day's work plans for taking in and out operations, stuffing into containers, etc. They share thoroughly basic operation procedures of forklift, and they work in a manner that is suitable for the characteristics, the nature and the shape of each cargo.



Pointing and Calling

Focusing on the common theme of accident prevention and safety assurance for cargoes among the work fields, our workers are working every day.



Training of Forklift Operation

Inviting lecturers in safety and quality, we give lectures about forklift operation and safety work to our workers at each work field.

The List of Various Business Sites



Head Office

2-17-4 Shibaura, Minato-Ku, Tokyo 108-0023, Japan
TEL: +81-3-3453-1371 (Sales Department)
TEL: +81-3-3453-1381 (Administration and Accounting Department)
FAX: +81-3-3455-7677

■ By Train

JR Line: 10-minute walk from Tamachi Sta. (East Exit)
Tokyo Metro Asakusa Line: 10-minute walk from Mita Sta. (Exit A5)
Tokyo Metro Mita Line: 10-minute walk from Mita Sta. (Exit A5)



Yokohama Branch

11-37, Shinyamashita 2-Chome, Naka-Ku
Yokohama, Kanagawa 231-0801, Japan
TEL: +81-45-622-8882
FAX: +81-45-629-1030

■ By Train

Minatomirai Line: 10-minute walk from Motomachi-Chukagai Sta. (Motomachi Exit)

■ By Car

3 minutes from the Shin Yamashita Exit on the Metropolitan Expressway Kanagawa Kariba Line



Ohi Wharf Operational Office

4-3-1 Tohkai, Ohta-Ku, Tokyo 143-0001, Japan
TEL: +81-3-3799-0440
FAX: +81-3-3790-9158

■ By Train

Near Shinagawa Sta. of JR Line, take a “品98” (shina 98) bus bound for Ota Market:
Get off at “Central Building” bus stop and walk for 5 minutes.



Annex of Ohi Wharf Operational Office

5-1-21 Tohkai, Ohta-Ku, Tokyo 143-0001, Japan
Tel: +81-3-3790-8567

■ By Train

Near Shinagawa Sta. of JR Line, take a “品98” (shina 98) bus bound for Ota Market:
Get off at “Central Building” bus stop and walk for 3 minutes.



Hitachinaka Operational Office

IPAC Hitachinaka North Wharf Distribution
Site, 768-27 Terunuma, Tohkai Mura,
Naka-Gun, Ibaraki 319-1113, Japan
TEL: +81-29-265-2056
FAX: +81-29-265-2058

■ By Car

From Tokyo (Northbound)
The Metropolitan Expressway → Joban Expressway (from Misato JCT to Tomobe JCT) → Kita-Kanto Expressway → Higashi-Mito Road → Hitachinaka Toll Road (as far as the terminus) → Ibaraki Prefectural Road 57 (bound for North Pier of Hitachinaka Port) → Ibaraki Prefectural Road 62 → North Pier Naibo in the port area of HitachinakaPort

From Tohoku (Southbound)
Joban Expressway (from Iwaki JCT to Tomobe JCT) → Kita-Kanto Expressway → Higashi-Mito Road → Hitachinaka Toll Road (as far as the terminus) → Ibaraki Prefectural Road 57 (bound for North Pier of Hitachinaka Port) → Ibaraki Prefectural Road 62 → North Pier Naibo in the port area of HitachinakaPort



Yamashita Wharf Office

279-3 Yamashita-Cho, Naka-Ku, Yokohama City,
Kanagawa 231-0023, Japan
(1st Floor, Municipal Shed, Yamashita Wharf No.8)
TEL: +81-45-641-5031/5039
FAX: +81-45-662-4088

■ By Train

Minatomirai Line: 20-minute walk from Motomachi-Chukagai Sta.

■ By Car

10 minutes from the Shin Yamashita Exit on the Metropolitan Expressway Kanagawa Kariba Line



YABUKI KAIUN(SHANGHAI) CO., LTD
(our Chinese local subsidiary)

RM.608, WUJIAO FENGDA BUSINESS PLAZA
SOUTH NO.47
ZHENGJI ROAD, YANGPU DISTRICT,
SHANGHAI, CHINA
TEL : +86-21-5522-7092/3707
FAX : +86-21-5522-7091

■ Access by Train

Subway Line 10: 8 minutes from Exit No. 2 of Jiang Wan
Ti Yu Chang Station
Subway Line 10: 6 minutes from Exit No. 3 of Jiang Wan
Ti Yu Chang Station
(Exit No. 3 passes through an underground path of a
department store and is available from 10:00 to 22:00
on weekdays.)

■ Access by Car

From Pu Dong Airport: 1 hour (bound for Wu Jiao
Chang)
From Terminal No. 1 of Hong Qiao Airport: 40 minutes
(bound for Wu Jiao Chang)
From Terminal No. 2 of Hong Qiao Airport: 1 hour
(bound for Wu Jiao Chang)
From Shanghai Station: 30 minutes (bound for Wu Jiao
Chang)
From Hong Qiao Station: 1 hour (bound for Wu Jiao
Chang)



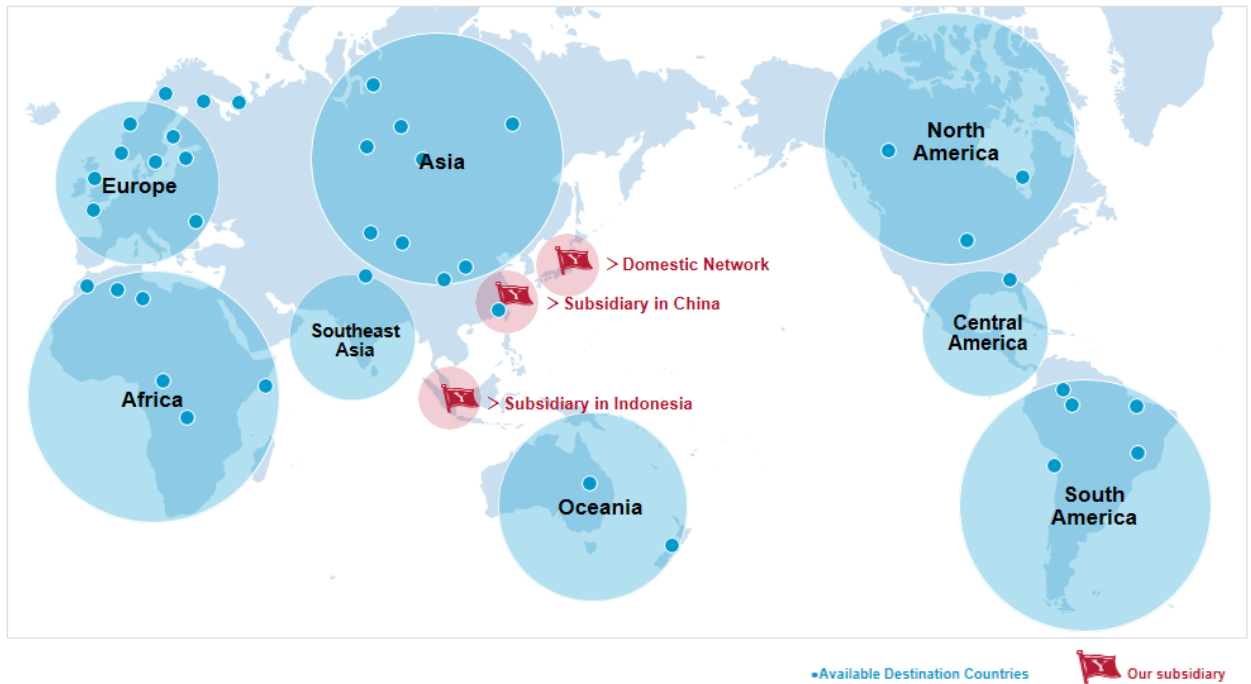
YABUKI KAIUN (INDONESIA) CO., LTD
(PT.YABUKI TANGGUH INDONESIA)

Central Cakung Business Park Blok K No.37,
Jl.Raya Cakung Cilincing Jakarta

■ by Car

About 1 hour by car from Soekarno–Hatta International
Airport
after heading for Tanjun Priok Harbor

Overseas Network



99 countries

Using our broad and reliable overseas network connecting with our subsidiaries in China and Indonesia and also with agents all over the world, we provide International Intermodal Transportation Service (door-to-door NVOCC service).

- | | | | | | | |
|--------------|------------------|--------------|---------------|----------------|------------------|--------------|
| ● ANGOLA | ● COLOMBIA | ● GUATEMALA | ● KOREA | ● NEW ZEALAND | ● SPAIN | ● USA |
| ● ARGENTINA | ● COSTA RICA | ● HONG KONG | ● KUWAIT | ● NIGERIA | ● SRI LANKA | ● UZBEKISTAN |
| ● AUSTRALIA | ● CROATIA | ● HUNGARY | ● LATVIA | ● NORWAY | ● SUDAN | ● VENEZUELA |
| ● AUSTRIA | ● CZECH REPUBLIC | ● INDIA | ● LEBANON | ● OMAN | ● SWEDEN | ● VIETNAM |
| ● AZERBAIJAN | ● DENMARK | INDONESIA | ● LIBYA | ● PAKISTAN | ● SWITZERLAND | ● ZAMBIA |
| ● BAHRAIN | ● DOMINICAN | | ● LITHUANIA | ● PHILIPPINES | ● SYRIA | ● ZIMBABWE |
| ● BANGLADESH | ● REPUBLIC | ● IRAN | ● MADAGASCAR | ● POLAND | ● TAIWAN | |
| ● BELGIUM | ● ECUADOR | ● IRAQ | ● MALAWI | ● PORTUGAL | ● TANZANIA | |
| ● BOTSWANA | ● EGYPT | ● IRELAND | ● MALAYSIA | ● QATAR | ● THAILAND | |
| ● BRAZIL | ● ERITREA | ● ISRAEL | ● MALTA | ● REUNION | ● TUNISIA | |
| ● BULGARIA | ● ESTONIA | ● ITALY | ● MAURITIUS | ● ROMANIA | ● TURKEY | |
| ● CAMBODIA | ● FINLAND | JAPAN | ● MEXICO | ● RUSSIA | ● UAE | |
| ● CAMEROON | ● FRANCE | | ● MOROCCO | ● SAUDI ARABIA | ● UGANDA | |
| ● CANADA | ● GERMANY | ● JORDAN | ● MOZAMBIQUE | ● SINGAPORE | ● UKRAINE | |
| ● CHILE | ● GHANA | ● KAZAKHSTAN | ● MYANMAR | ● SLOVENIA | ● UNITED KINGDOM | |
| CHINA | ● GREECE | ● KENYA | ● NETHERLANDS | ● SOUTH AFRICA | ● URUGUAY | |



Passionate Indonesia !

YABUKI
INDONESIA

From Indonesia to the World
From the World to Indonesia

We can provide high quality transport service based on experience of handling various cargoes which we built up in a hundred years of career. Our motto is not only providing our forwarding service, but to provide full satisfaction to our customer. Absolute handling skill and knowledge of transportation in Japan and Indonesia can make this come true.

Principal Business Activities

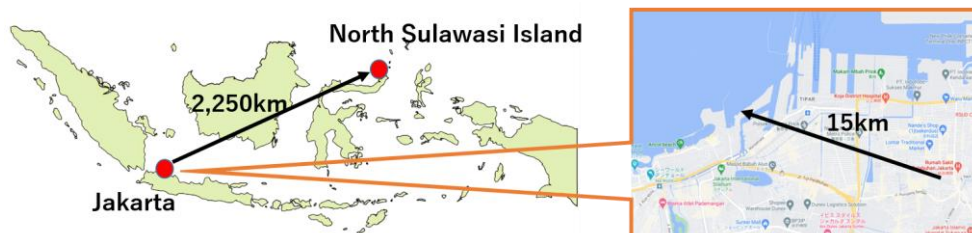
- International Freight Forwarding for Sea/Air
- Domestic Freight Forwarding for Sea/Air
- Transport by Truck/Trailer
- Warehouse Management
- Packing
- Unpacking/Installing
- Customs Clearance
- Consultation for Logistics

WORK EXPERIENCES

Case 1 Domestic Transport by Sea/Land

We provide high-quality domestic transport services in Indonesia. We have a lot of experience of not just transport on an island but also of interisland transport by ro-ro ship and LCT ship. We propose our best transportation services to all our customers with the most optimal route and mode at the best price. (LCT vessel: approach ashore of local beachheads, used for unpaved area.)

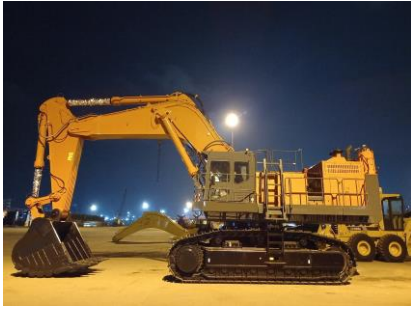
LCT Transport From Jakarta to North Sulawesi Island



Most important thing in order to arrange high quality transport is choosing right vessel and vehicle with knowledge about the local area and product, that match with cargo. Here is an example of our work for transport of construction machine. Land transport from warehouse placed in 15km away from Jakarta LCT berth, transship to LCT vessel at berth which heading to destination for 2,250km.



In case of transporting heavy cargo safely to the destination, consider traffic condition, and congestion in Indonesia, as well as the weather such as heat and thunderstorms. Its necessary to get the picture of local situation and make decisions that comes from our experiences. (Picture on the right: transporting in night to avoid traffic jam in daytime)



In the case of transporting large cargo, sometimes it required to arrange transportation for each disassembled part. It is always important to have transportation plan not only by focusing the shape and size of the products, but to recommend best trailer type to ensure the working process upon arrival at site



Assemble the parts that transported separately to the shipping site, those will become completed style with weight around 120 ton. We pay huge attention while loading the machine to the vessel by itself. (self-propelled)
(Picture: self-propelled shipping after assembly is completed)

Tranship to LCT vessel and transport 2,250km to the port in the north side of Sulawesi Island in about 15days.

What YABUKI KAIUN can do

Our strength is in arranging transport of Heavy cargo. Meanwhile YABUKI KAIUN performing smooth door to door transportation (from Ocean transport to storage, domestic transportation as well), you can focus on your own business. Another strength is to ensure the vehicles for various cargoes such as heavy cargo, long length cargo, and etc.. This capability comes from our plenty experiences.



PT. TANGGUH LOGISTINDO
GLOBAL LOGISTICS

PT. Tangguh Logistindo is a young company established in 2008, but more than 140 staff members with knowledge and experience of logistics are working hard every day. Providing meticulous Japanese-styled services, we have gained the confidences of not just local customers but also of many other customers. We have equipped 55 trailers and 100 tractors which cover working areas in Jakarta and other Indonesian locations.



Case 2

From Indonesia to the World

We are a member of overseas logistic networks covers Asia, Europe and North America. We arrange shipment worldwide by utilizing our broad network. We will arrange transportation based on our experience, handling various products from container cargo to project cargo to fulfill your demands.



Parts for excavator to use for (Flat Trailer)



Shipping to RORO Vessel

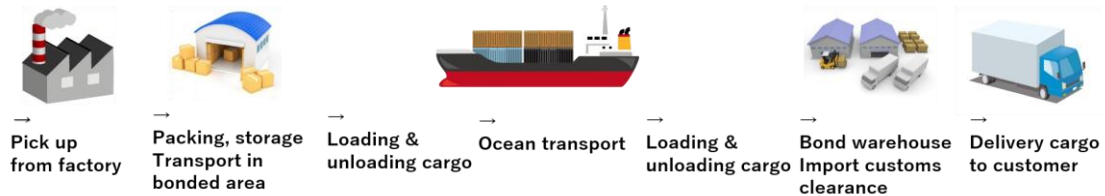


Shipment to East Timor

Case 3

Consultation for Logistics

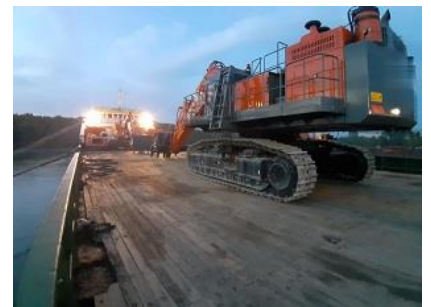
Based on Yabuki Kaiun's know-how accumulated for more than 90 years we propose our best idea for transportation method, etc. in line with our customers' requests. Please feel free to contact and consult us.



Restaging a cargo for production line



Multi Axle Trailer use for tank transportation



Domestic liner LCT

Our team in Indonesia is able to operate in Japanese, English and Indonesian Language. We guarantee our service with hospitality in handling cargo from origin to its destination.



Name: PT. YABUKI TANGGUH INDONESIA

Address: Central Cakung Business Park Blok K
No.37, Jl.Raya Cakung Cilincing Jakarta

TEL : 62-21-2606-0306

Establishment : April 2015

Capital : 250 thousand US dollars



We have been starting in April 2015 !. We are very new and we have a can-do spirit !

If you ask us once, we can respond to your requirement by our maximum effort and zeal. We always try to deliver our excellent service to our client for export, Import and domestic job. And our motto is "Challenge".

You can count on us for freight forwarding services in China.

Our Principal Services

- Agency Services for International Transportation
- (1) International transportation arrangements for sea/air cargoes
 - (2) Transportation by truck
 - (3) Warehouse storage and inventory management
 - (4) Packing
 - (5) Agency services for customs clearance, inspection and insurance

International Multimodal Transportation (NVOCC)(NVOCC)

- (1) NVOCC (MOC-NVO2246: Approval by China Ministry of Transportation and Communications)

Consulting Services

- (1) Providing consulting services relating to logistics

YABUKI
SHANGHAI

We provide the transportation of project cargoes, 3PL logistics, and all other forwarding services !

We respond to the needs of services not just for forwarding, but also for heavy/large project cargo transportation, and for the 3rd-party logistics. You can count on us for all the freight forwarding services in China.

We have a lot of experiences and results in the field of Chinese logistics. To provide our services in accordance with Chinese domestic environmental changes on daily basis, we don't neglect our efforts to collect and analyze information.

Based on the above, we will keep it in mind to provide our customers with detailed and flexible Japanese-style responses.

Examples of Our Actual Performance

Case 1 In the Regions of East China and Central China

We have a lot of experiences of handling import/export in the regions of East China, Anhui Province and the region of Central China, mainly in Shanghai.

We provide the most optimal means of transportation using feeder boats and trailers.



Case 2 In the South, North, Southeast and Southwest Regions of China, Chinese Special Administrative Regions including Hong Kong, and Mongolia.

We have a lot of actual results of import/export handlings in the region of South China including Hong Kong, and also in the region of North China including Tianjin, Dalian and Tsingtao. We handle rail and truck transportation services to Inner Mongolia and Mongolia for the cargoes from Japan and many other countries of the world.

You can count on us for transportation services of containerized cargoes and large cargoes to Inner Mongolia and Mongolia.



Case 3 Handling of Heavy/Large Cargoes

We also have a lot of actual results for heavy/large cargoes, from receiving to delivering, or up to installing of such cargoes in various places in China.



Global Project Logistics Network

We are the member of Global Project Logistics Network, and we provide transportation services for cargoes from China to other countries, and from other countries to China. We provide services meeting to our customers' needs, such as door-to-door transportation, etc. for various types of cargoes from containerized stuff to project equipment.

3rd-Party Logistics (Management of general warehouses and bonded warehouses, etc.)



Being thorough with Japanese-style quality management, We keep the same level of 3PL services also in China.

To meet our customers' needs, we propose appropriate solutions for the whole logistics optimization.

- Consultation for the scope of services from the introduction to the start-up of a warehouse in China
- Providing logistics system by taking the whole optimization into consideration
- Entering/exiting control and appropriate inventory management of warehouse
- Storage with freshness management and storage location control for short time picking
- Packing management in accordance with products' characteristics
- Reduction of total logistics costs based on the advantages of international multimodal transportation



And for transportations we allocate vehicles in accordance with the loading efficiency and the volume of cargoes, and we provide services from the viewpoint of cost reduction and also at customers' other requests.

Bonded warehouses respond to import/export operation and cross transportation between foreign countries requiring rapid management. We provide our services of bonded storage, import/export operation using general warehouses, and heavy/long cargoes including packing operation.

And we have also a lot of results of handling air cargoes delivered from warehouses.

Bonded warehouses respond rapidly to import/export operations and cross transportations between foreign countries.

We provide our services of import/export operations and handlings of heavy/long and large cargoes by using general warehouses.

And we respond also to handlings of air cargoes.

COMPANY PROFILES

YABUKI KAIUN (SHANGHAI) CO., LTD

(our Chinese local subsidiary)

Address: RM.608, WUJIAO FENGDA BUSINESS PLAZA SOUTH NO. 47 ZHENGYI ROAD, YANGPU DISTRICT, SHANGHAI, CHINA
TEL : +86-21-5522-3707/7092

Contact Information of Shenzhen Office

Address: 2nd floor, B tower/C tower office building ,Xili Bai mang village Xiangzhao Logistics Park, Nanshan District, Shenzhen, China
TEL : +86-755-2683-2384

Date of establishment: June 2007

Capital: 700 thousand US dollars

Investor: YABUKI KAIUN KAISHA, LTD. (Japan)100%

<http://www.yabuki-kaiun.co.jp/>